

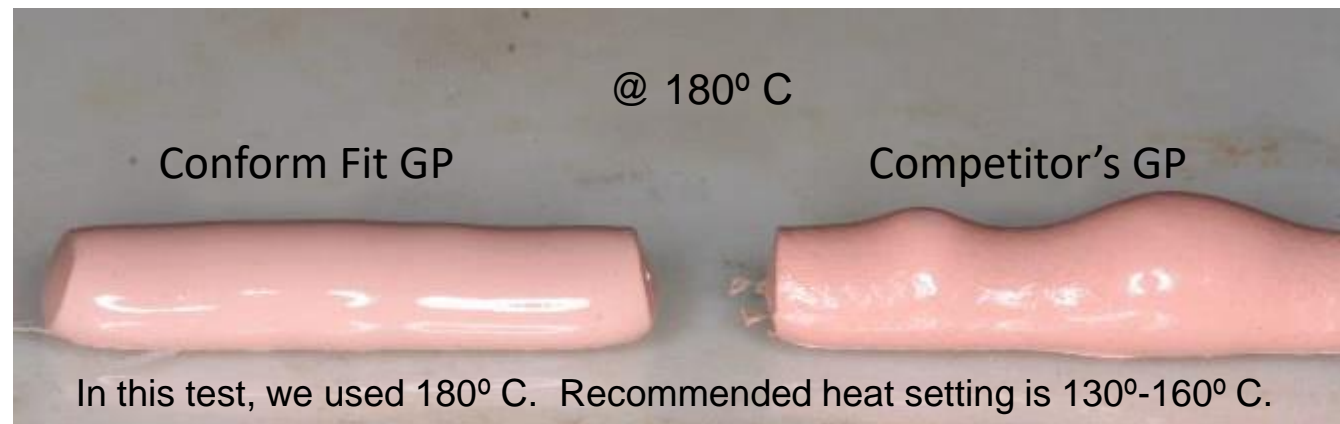
# Gutta-Smart™



# The Gutta-Smart™ Story

# Gutta-Smart™ is driven by Conform Fit™ technology

- Our unique Conform Fit™ gutta-percha (available in master cones and cartridges) heats more consistently with better flow, achieving a longer reach in the canal and better adaptation to the canal walls, promoting a 3D fill. **Heat transfers through the gutta-percha cone up to 4mm beyond the heat source** to ensure warm, flowable gutta-percha reaches the apex. This enables the clinician to utilize a lower heat plugger temperature, thereby improving patient safety.

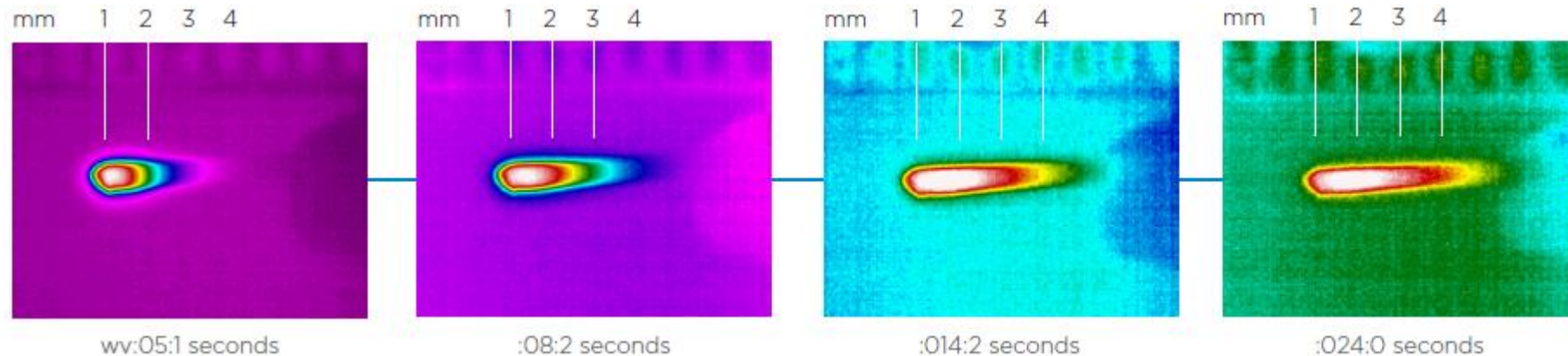


# Gutta-Smart™ Cartridges & Conform Fit™ GP



## Improved melt and flow characteristics to the end

- In both *Master Cones and GS Cartridges*
- Heat transfers up to 4mm beyond standard gutta-percha.
- No other gutta-percha on the market provides the unique benefits of Conform Fit Gutta-Percha



*These time-lapse thermal images demonstrate the heat transference within the micronized gutta-percha after the heat source has been removed.*

# Gutta-Smart™ & Conform Fit™ GP



## Patient Safety

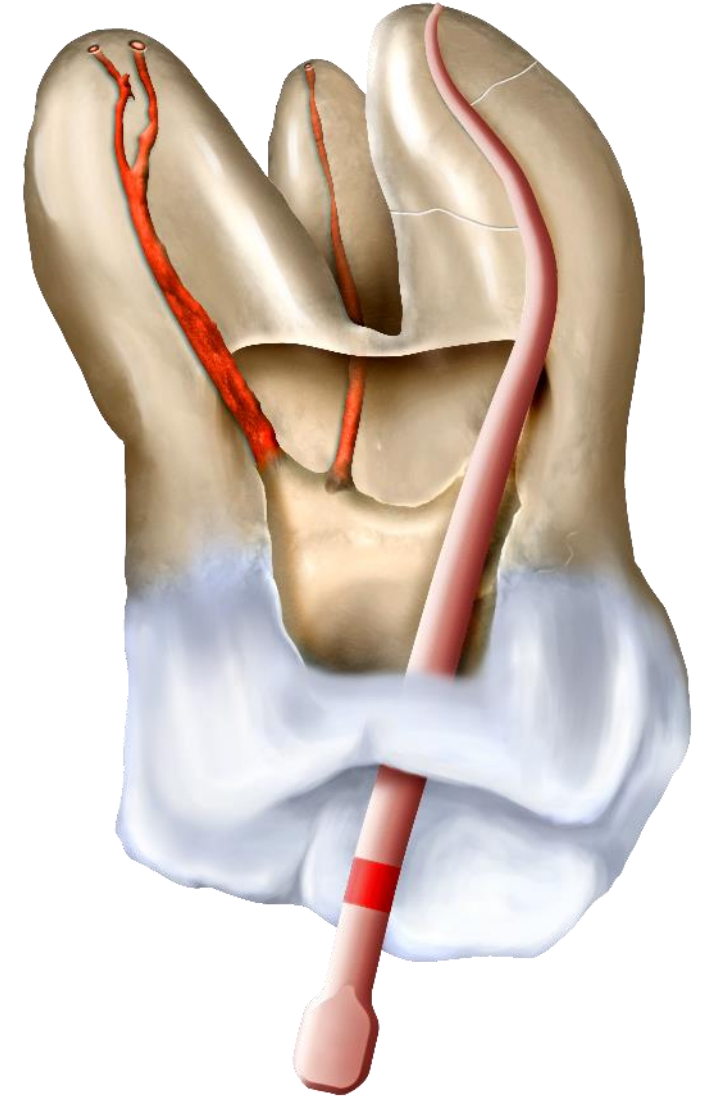
- Master Cone and Cartridge GP are not made with natural rubber latex
- Lower flow and pack temperatures minimize patient discomfort

# Gutta-Smart™ & Conform Fit™ GP



## The right fit you can feel

- Conform Fit master cones
  - Provide a snug apical fit for accurate tug-back.
  - Manufactured with precision using injection molding
  - Made to match the shape of a canal prepared using Dentsply Sirona files.
  - Consistent dimensional sizing allows less variability than hand rolled gutta-percha points.
  - Provides consistent shape and fit 40% more often than hand-rolled gutta-percha.
- Gutta-Smart™ Cordless Solution
  - Cordless handpieces provide precise control and excellent tactile feedback
  - Gutta-Smart Cartridges (containing Conform Fit GP) provide the same tactile feel as the master cones



# Gutta-Smart™ & Conform Fit™ GP



## The warm vertical solution that flows together

- Conform Fit master cones used with the Gutta-Smart Cartridges are:
  - Designed to work together
  - The same low-temperature flow characteristics
  - The same radiopacity
  - A complete warm vertical solution



# Mensajes clave para Gutta-Smart



**Portátil y con libertad de movimientos.**



**Diseño robusto.**



**Batería de larga duración.**





# La pieza de mano

Punta de calor, se adapta mejor a los conductos estrechos

Indicador luminoso azul, se active cuando calienta

Diseño ergonómico y bien balanceado

Activación

Aviso sonoro cuando está calentando

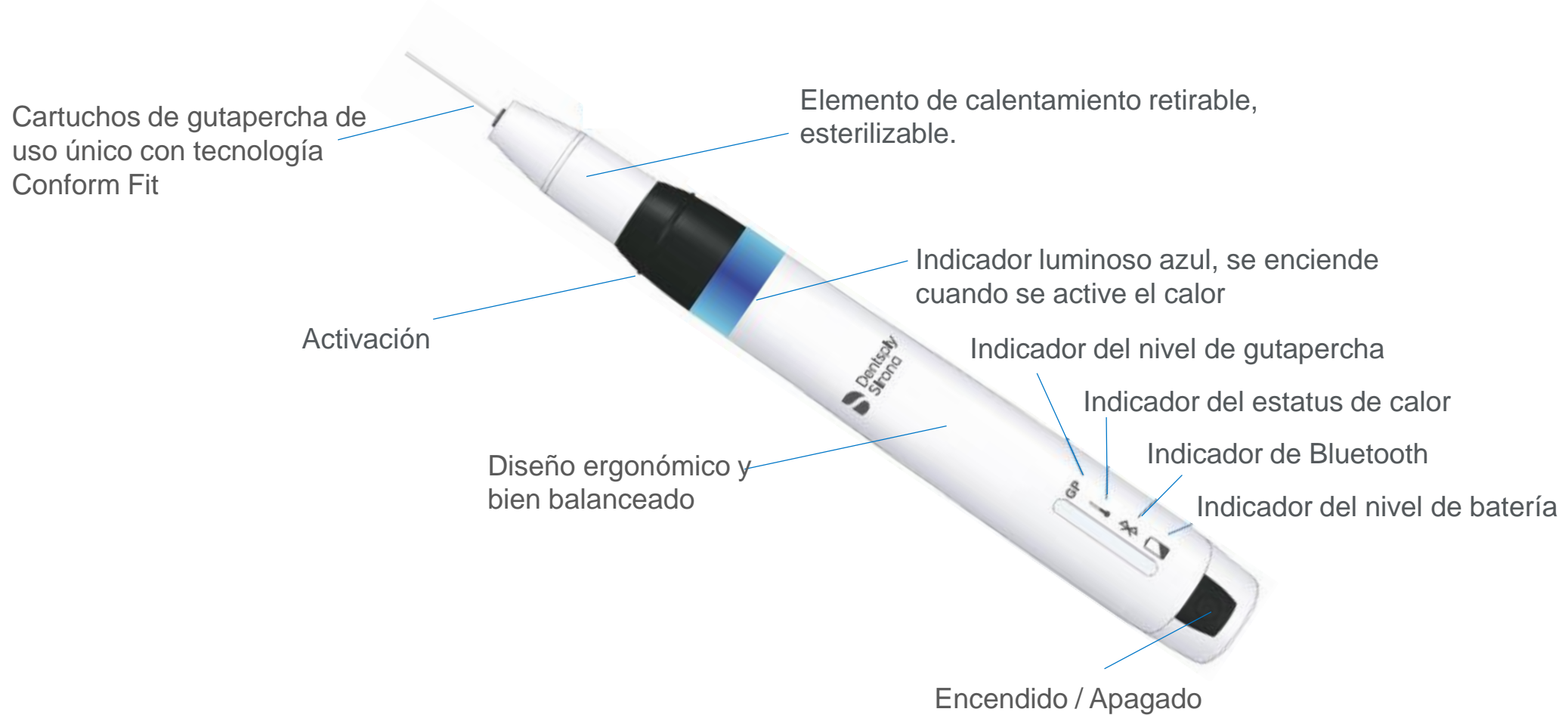
Indicador de Bluetooth

Indicador de color verde cuando la bacteria está cargada y rojo cuando está baja de carga

Encendido / Apagado



# La pieza de mano para liberación de Gutapercha

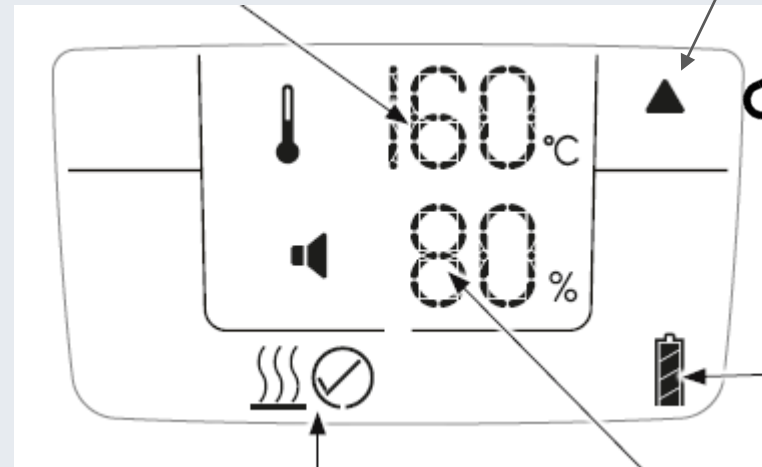


# La base



Indicador del control de temperatura

Indicador de la pieza de mano de la pantalla



Indicador de bacteria de la pieza de mano

Indica si las dos piezas de mano funcionan correctamente

Ajustes de volumen y flujo de la gutapercha.

# Consumibles Gutta-Smart

Presentación:

- Blíster de 10 cartuchos
- Puede utilizarse con Calamus Dual
- Temperatura recomendada 130° - 160° C



Presentación:

- 1 por blíster
- No puede ser utilizado con el Calamus Dual

